



HTB60F

Series model

Actuator





Product Applications

1. Massage chair

(Shampoo chair/office chair/home chair)

2. Medical machinery

(Hospital bed/Dental chair/Electric chair)

3. Lifting chairs

4. Cinema seat

5. Recliners and sofas

6. Wheelchair

HTB60F series linear actuator is designed for lift applications like recliners, Massage Chair, Medical Machinery, lifting chairs and movie theater seating. Its right angle design reduces noise and allows for fitment into most applications.

In addition, the HTB60F is available with optional Hall sensors for position feedback. It can also be used where freewheeling push only functionality is desired.

GeMinG brand always provides quality products with long-life.

Product Features	
Low noise:	45DB
Motor type:	DC brush motor
Screw type:	Trapezoidal screw
Input Voltage:	12V/24V DC, (36V&48V DC can be customized)
Max. load capacity:	8000N(Push), 4000N(Pull)
Stroke range:	50-800mm
Speed range:	3-40mm/s
Min. dimensions:	Stroke + 175mm, Stroke + 190mm(stroke >400mm)
Color:	Black, White
Safety Certification:	Compliance with ISO9001-2008, CE and RoHS
Operating temperature range:	-25 ° C ~ + 65 ° C
Higher duty cycle:	25%
Waterproof rating:	IP54
Limit switch:	Built-in(not adjustable)
Option for signal output:	Hall sensor
Other options:	1. Overload protection
	2. Synchronized control unit (one controller for 2, 3, 4, up to 16 pcs)



Series model

HTB60F

Load and speed						
Code	Rated Load (N)		Self-Locking force (N)	Rated Current (A)	No-Load/Full Load Speed (MM/S)	
No.	Push	Pull	Static	Full-Load	2600RPM	3400RPM
Motor voltage (24V DC)						
A	8000	4000	8000	5	2/1.8	4/3
B	6000	4000	6000	5	4/2.2	5/3.8
C	5000	4000	5000	5	6.0/4.0	7/5
D	3500	3000	3500	5	8.0/7.6	15/12
E	2500	2000	2500	5	16/12.5	20/18
F	2000	2000	2000	5	20/17	27/23
G	1000	1000	1000	5	23/20	34/30

Remark

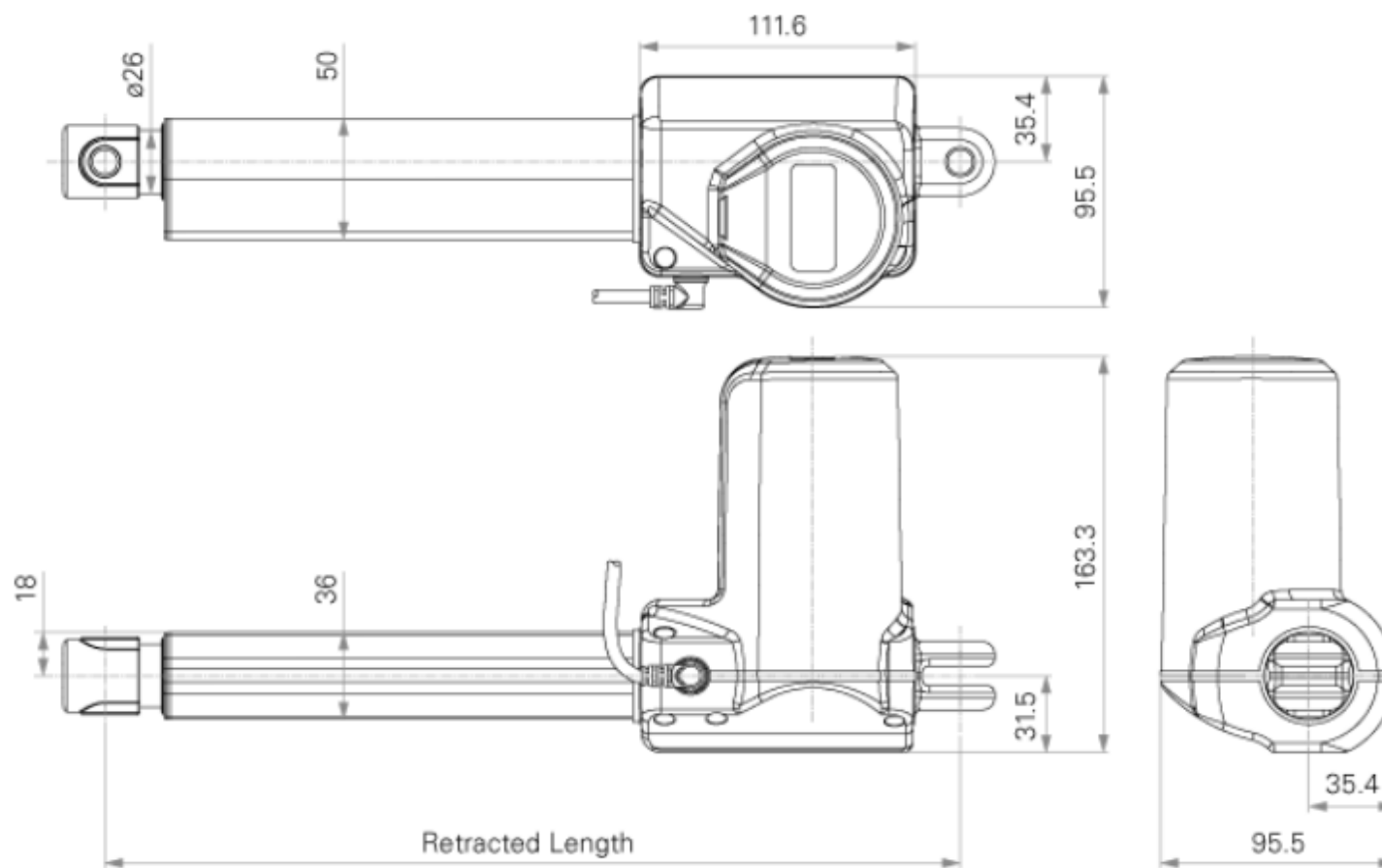
1. The current of the 12v motor is twice that of the 24v motor.
2. Take the self-locking force with the same information.
3. Avoid shaking during working.
4. Need vertical or horizontal installation, because Mounting Angle will affect the load capacity.
5. If there is an installation angle, please select a load of 2 times or more of the actual weight.



Series model

HTB60F

Drawings
Standard size
(mm)





Series model

HTB60F

Reference Chart

Load & Speed

Load±10% (N) Speed ± 2 (mm / sec)

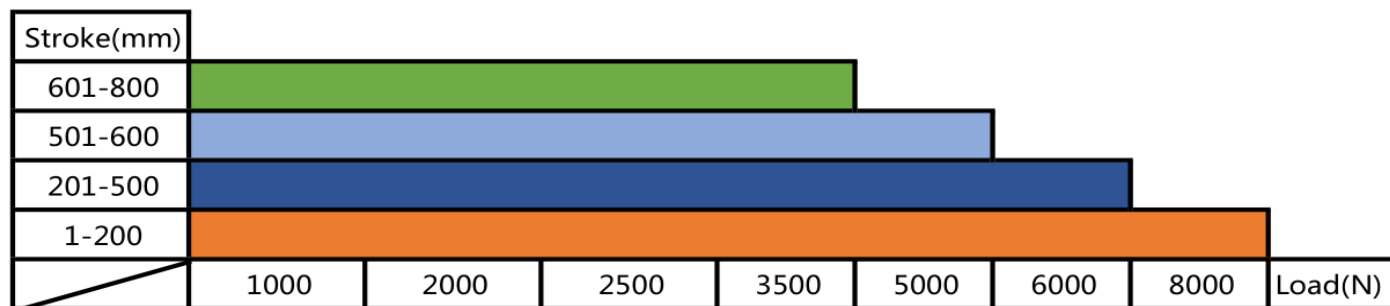
Load	8000	6000	5000	3500	2500	2000	1000	updating...
Speed (No-load)	2	4	6	08	16	20	23	

Stroke & Mounting Dimension

Stroke ± 2 (mm), Mounting dimensions ± 2 (mm)

Stroke	50	100	150	200	250	~~~	400	~~~	600
Size	225	275	325	375	425	S+175mm	590	S+190mm	790

Load & Stroke



How to calculate installation size

eg: stroke 100mm, mounting dimensions(Retracted Length)=stroke+175mm=275mm,
the maximum size(Extended length)=stroke+stroke+175mm=375mm



Series model

HTB60F

HTB60F Model selection code table

HTB60F

<input type="checkbox"/>	Voltage	12=12V DC	24=24V DC	Customized
<input type="checkbox"/>	Stroke (mm)	Option from 50~800mm		
<input type="checkbox"/>	Installation Size (mm)	Note: Before selecting dimensions, please refer invalid schedule Refer to page 4-5		
<input type="checkbox"/>	Speed (mm/s)	Refer to page 3, 5		
<input type="checkbox"/>	Load (n)	Refer to page 3, 5		
<input type="checkbox"/>	Front Attachment	1 = Fork head with hole Φ 12	2 = Rod with hole Φ 12	
<input type="checkbox"/>	Rear Attachment	1 = Fork head with hole Φ 10	2 = Customized	
<input type="checkbox"/>	Signal output	A = no	B = Hall sensor	
<input type="checkbox"/>	Cable length	1 = straight 300mm	2 = straight 600mm	3 = straight 1000mm 4 = customized

Example: Voltage: 12V DC, stroke 100MM, load 8000N

Code: HTB60F-12-100-275/375-3-8000N-1-1-A-1

Terms of Use

GeMing user's responsibility to determine the suitability of a particular product licensing applications. However, continued research and development process to improve its product performance, GeMing brand products without prior notice and may be modified or changed. Therefore, GeMing can not guarantee some information within the publication of its product catalog to maintain the most accurate and authentic state. GeMing retention stop on sales of the company website, product directory, Terms of Use or the powers of any other written information on the product listed.