



**Customization, stable quality, long product life
And comply with linear transmission solutions for industrial applications**

INDUSTRIAL DRIVE APPLICATION

GeMinG transmission Electric linear transmission technology Quality creates the future, Your choice today, This is our effort tomorrow!

Many modern industrial intelligent applications today require automated systems that can support heavy loads, especially in industrial automation, manufacturing, mining, nuclear power and military fields, artificial intelligence program control and other applications. The current technology has reached the level, and will only improve in the future. Compared with the hydraulic and pneumatic power systems that have been commonly used in the past, more and more machine manufacturers regard electric linear actuators as a more cost-effective and reliable new option. Please refer to this catalog for product information on industrial applications and linear transmission, and we will explain the benefits that this product can bring.



Customization, stable quality, long product life
And comply with linear transmission solutions for industrial applications

INDUSTRIAL DRIVE APPLICATION

Industrial field

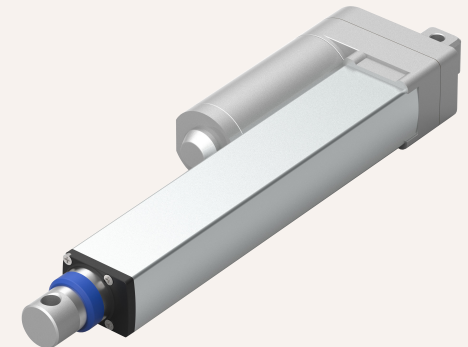
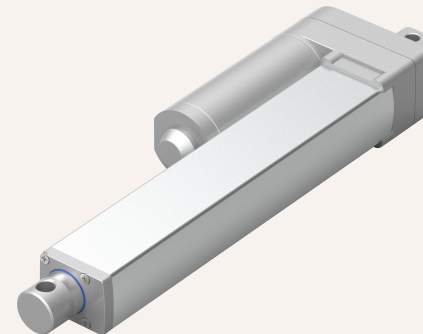
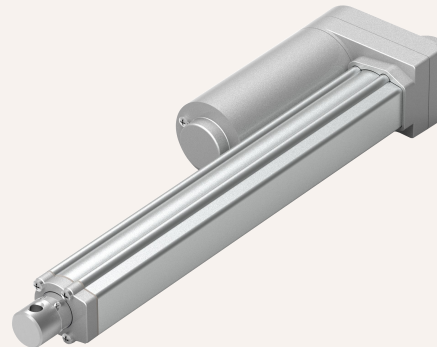
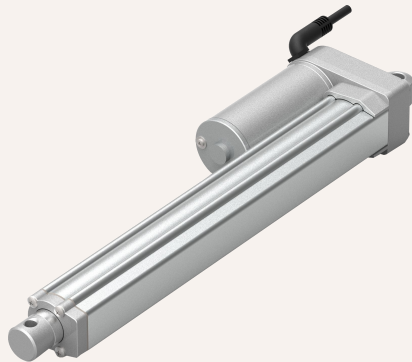
Industrial field

In modern industry, linear actuator lifting systems play a vital role. They are widely used in various occasions, providing higher efficiency and safety for production and operation. The basic principle of lifting columns. Lifting columns are driven by electric motors or hydraulic systems, so that the columns can move up and down, thereby achieving lifting and lowering control of objects. This simple and efficient design makes lifting columns an indispensable part in many industrial scenarios.

05

TA series

HTA series is the earliest product line developed by Gongying Application. HTA series actuators for industrial applications feature compact installation dimensions and can be installed in small space applications without worrying about affecting their load, speed, or low-noise performance.



HTA15	HTA18	HTA21	HTA23
Maximum load: 1,500N	Maximum load: 4,500N	Maximum load: 4,500N	Maximum load: 2,500N
Lifting speed: 5-80 MM/S	Lifting speed: 5-90 MM/S	Lifting speed: 7-44 MM/S	Lifting speed: 10-60 MM/S
Travel range: 20-600MM	Travel range: 20-600MM	Travel range: 20-800MM	Travel range: 100-1500MM
Retraction height: stroke + 105MM	Retraction height: stroke + 105MM	Retraction height: stroke + 125MM	Retraction height: stroke/2 + 145MM
Lateral moment: 50Nm dynamic	Lateral moment: 50Nm dynamic	Lateral moment: 80Nm dynamic	Lateral moment: 50Nm dynamic
Motor options: DC motor,	Motor options: DC motor, CAN bus	Motor options: DC motor, synchronous control	Motor options: DC motor, synchronous control

TA series



HTA20

Maximum load: 4,500N

Lifting speed: 5-80 MM/S

Travel range: 30-900MM

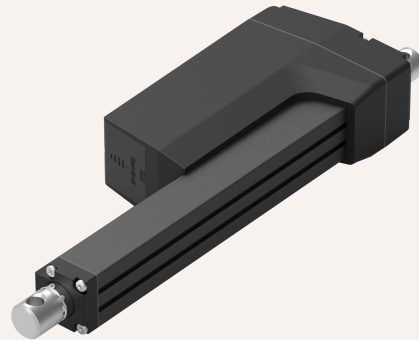
Retraction height: stroke + 140MM

Lateral moment: 200Nm dynamic

Motor options: DC motor,

TW series

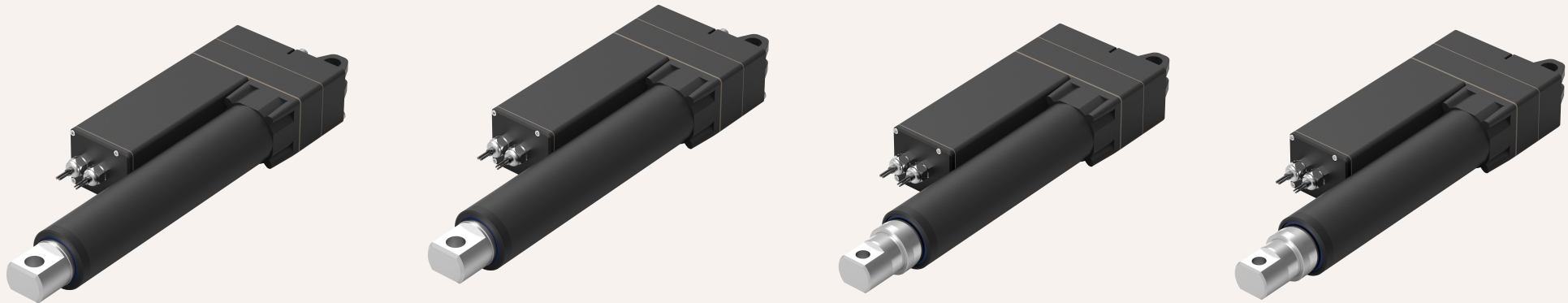
HTW series is the earliest product line developed by Gongying Application. HTW series actuators for industrial applications feature compact installation dimensions and can be installed in small space applications without worrying about affecting their load, speed, or low-noise performance.



HTW10	HTW76		
Maximum load: 7,000N	Maximum load: 16,000N		
Lifting speed: 5-35 MM/S	Lifting speed: 5-100 MM/S		
Stroke range: 50-800MM	Travel range: 50-1000MM		
Retraction height: stroke + 200MM (clutch type)	Retraction height: stroke + 200MM		
Retraction height: stroke + 250MM (switch type)	Lateral moment: 300Nm dynamic		
Lateral moment: 300Nm dynamic	Motor options: DC motor, brushless		
Motor options: DC motor,	motor, CAN bus		

TL series

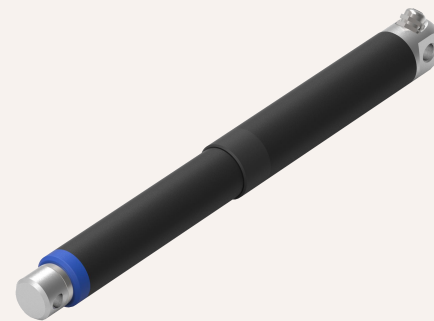
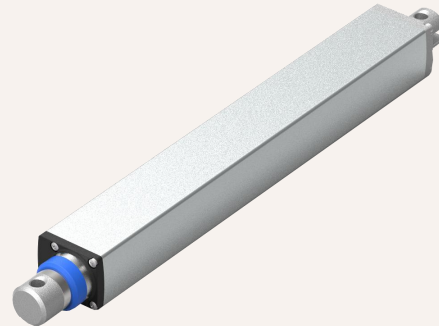
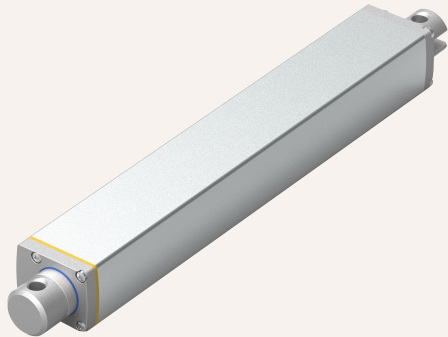
HTW series is the earliest product line developed by Gongying Application. HTW series actuators for industrial applications feature compact installation dimensions and can be installed in small space applications without worrying about affecting their load, speed, or low-noise performance.



HTL2-68	HTL2-83	HTL3-68	HTL3-83
Maximum load: 20,000N	Maximum load: 3,500N	Maximum load: 9,000N	Maximum load: 15,000N
Lifting speed: 5-125 MM/S	Lifting speed: 7-125 MM/S	Lifting speed: 7-150 MM/S	Lifting speed: 7-150 MM/S
Travel range: 50-1200MM	Travel range: 100-1500MM	Travel range: 100-2000MM	Travel range: 100-3000MM
Retraction height: stroke +250MM	Retraction height: stroke +250MM	Retraction height: stroke/2 +250MM	Retraction height: stroke/2 +250MM
Lateral moment: 800Nm dynamic	Lateral moment: 1200Nm dynamic	Lateral moment: 500Nm dynamic	Lateral moment: 800Nm dynamic
Motor options: DC motor, servo motor, integrated control, CAN bus	Motor options: DC motor, servo motor, integrated control, CAN bus	Motor options: DC motor, servo motor, integrated control, CAN bus	Motor options: DC motor, servo motor, integrated control, CAN bus

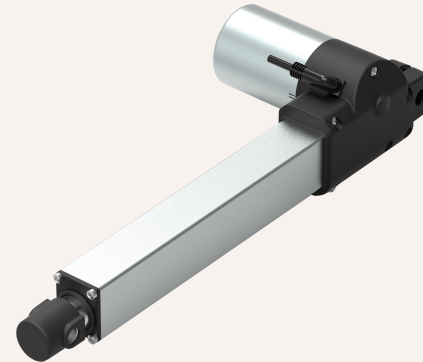
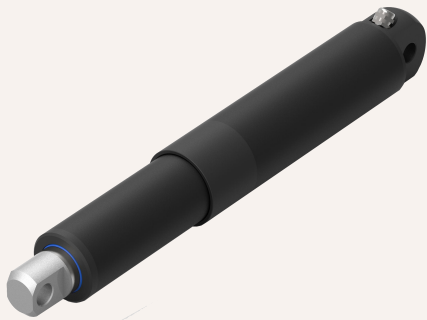
TK series

HTK series is the earliest product line developed by Gongying Application. The HTK series actuator for industrial applications features a straight rod and compact design that can be installed in small space applications without worrying about affecting its load, speed, or low-noise performance.



HTK37	HTK38	HTK35	HTK55
Maximum load: 1,500N	Maximum load: 1,000N	Maximum load: 1,500N	Maximum load: 6,000N
Lifting speed: 5-80 MM/S	Lifting speed: 8-90 MM/S	Lifting speed: 5-90 MM/S	Lifting speed: 2-90 MM/S
Travel range: 20-600MM	Travel range: 100-1000MM	Travel range: 20-800MM	Travel range: 50-1200MM
Retraction height: stroke + 230MM	Retraction height: stroke /2 +260MM	Retraction height: stroke + 230MM	Retraction height: stroke +320MM
Lateral moment: 50Nm dynamic	Lateral moment: 50Nm dynamic	Lateral moment: 50Nm dynamic	Lateral moment: 80Nm dynamic
Motor options: DC motor,	Motor options: DC motor,	Motor options: DC motor	Motor options: DC motor,

TK series



HTK75

Maximum load: 8,000N
 Lifting speed: 5-80 MM/S
 Travel range: 20-1000MM
 Retraction height: stroke + 500MM
 Lateral moment: 120Nm dynamic
 Motor options: DC motor,

HTK78

Maximum load: 4,000N
 Lifting speed: 8-90 MM/S
 Travel range: 100-2000MM
 Retraction height: stroke /2 +550MM
 Lateral moment: 120Nm dynamic
 Motor options: DC motor,

HTE5

Maximum load: 4,000N
 Lifting speed: 4-25 MM/S
 Travel range: 50-600MM
 Retraction height: stroke +175MM
 Lateral moment: 50Nm dynamic
 Motor options: DC motor,

HTE6

Maximum load: 6,000N
 Lifting speed: 4-25 MM/S
 Travel range: 50-600MM
 Retraction height: stroke +175MM
 Lateral moment: 50Nm dynamic
 Motor options: DC motor,

Customization, stable quality, long product life
And comply with linear transmission solutions for industrial applications

INDUSTRIAL DRIVE APPLICATION

TK

series

The TK series lift is specially designed for RV lifting. It is a lifting function used for RV space expansion. It can adjust the height of the RV roof according to actual needs to achieve the effect of increasing space and meet more usage needs. Simple structure: The overall structure is simple and easy to use.



HTK2-98

Maximum pipe size: 98 MM
 Maximum load: 20,000N
 Lifting speed: 5-100 MM/S
 Travel range: 50-1500 MM
 Retraction height: stroke + 500MM
 Lateral moment: 500Nm dynamic
 Motor options: DC motor, brushless motor, servo motor

HTK2-83

Maximum pipe size: 83 MM
 Maximum load: 20,000N
 Lifting speed: 5-100 MM/S
 Travel range: 50-1500 MM
 Retraction height: stroke + 500MM
 Lateral moment: 500Nm dynamic
 Motor options: DC motor, brushless motor, servo motor

HTK2-68

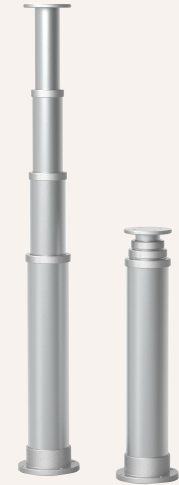
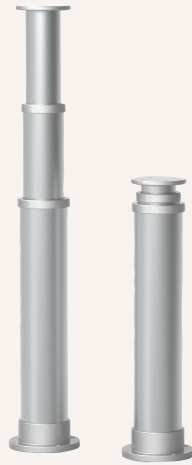
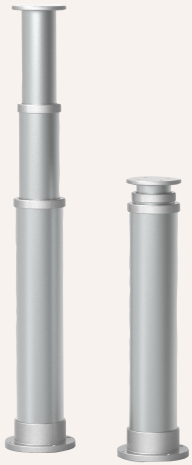
Maximum pipe size: 68 MM
 Maximum load: 8,000N
 Lifting speed: 5-100 MM/S
 Travel range: 50-1200 MM
 Retraction height: stroke + 500MM
 Lateral moment: 400Nm dynamic
 Motor options: DC motor, brushless motor, servo motor

HTK2-54

Maximum pipe size: 54 MM
 Maximum load: 4,000N
 Lifting speed: 5-100 MM/S
 Travel range: 50-800 MM
 Retraction height: stroke + 500MM
 Lateral moment: 300Nm dynamic
 Motor options: DC motor, brushless motor, servo motor

TK

series



HTK3-83

Maximum pipe diameter: 83 MM
 High load: 6,000N
 Lifting speed: 5-150 MM/S
 Travel range: 500-3000MM
 Retraction height: stroke +650MM
 Lateral moment: 500Nm dynamic
 Motor options: DC motor, servo motor, synchronous control, CAN bus

HTK3-98

Maximum pipe diameter: 98 MM
 Maximum load: 6,000N
 Lifting speed: 5-150 MM/S
 Travel range: 500-3000MM
 Retraction height: stroke +650MM
 Lateral moment: 500Nm dynamic
 Motor options: DC motor, servo motor, synchronous control, CAN bus

HTK3-115

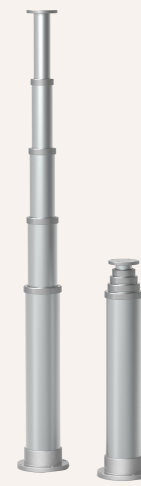
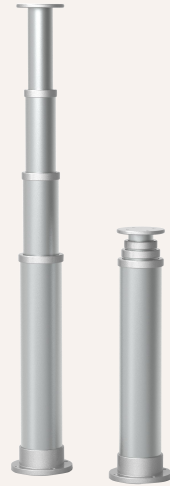
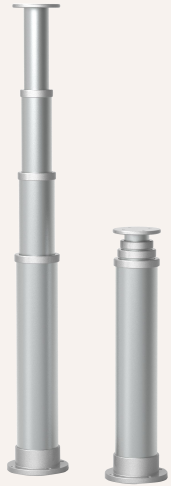
Maximum pipe diameter: 115 MM
 Maximum load: 6,000N
 Lifting speed: 5-150 MM/S
 Travel range: 500-3000MM
 Retraction height: stroke/2 + 650MM
 Lateral moment: 500Nm dynamic
 Motor options: DC motor, servo motor, synchronous control, CAN bus

HTK4-83

Maximum pipe diameter: 83 MM
 Maximum load: 4,000N
 Lifting speed: 5-200 MM/S
 Travel range: 1000-6000MM
 Retraction height: stroke/3 + 700MM
 Lateral moment: 400Nm dynamic
 Motor options: DC motor, servo motor, synchronous control, CAN bus

TK

series



HTK4-98

Maximum pipe diameter: 98 MM
 Maximum load: 4,000N
 Lifting speed: 5-200 MM/S
 Travel range: 1000-6000MM
 Retraction height: stroke/3 +700MM
 Lateral moment: 400Nm dynamic
 Motor options: DC motor, servo motor, synchronous control, CAN bus

HTK4-115

Maximum pipe diameter: 115 MM
 Maximum load: 4,000N
 Lifting speed: 5-200 MM/S
 Travel range: 1000-6000MM
 Retraction height: stroke/3 +700MM
 Lateral moment: 400Nm dynamic
 Motor options: DC motor, servo motor, synchronous control, CAN bus

HTK5-115

Maximum pipe diameter: 115 MM
 Maximum load: 2,000N
 Lifting speed: 5-300 MM/S
 Travel range: 1000-8000MM
 Retraction height: stroke/4 +800MM
 Lateral moment: 300Nm dynamic
 Motor options: DC motor, servo motor, synchronous control, CAN bus

TL series



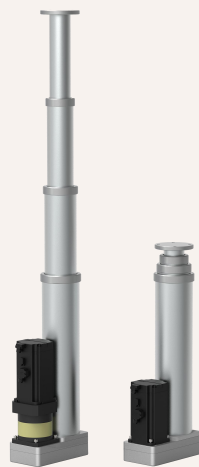
TL2-83	TL2-98	TL2-115	TL3-83
Maximum pipe diameter: 83 MM	Maximum pipe diameter: 98 MM	Maximum pipe diameter: 115 MM	Maximum pipe diameter: 98 MM
Maximum load: 6,000N	Maximum load: 6,000N	Maximum load: 6,000N	Maximum load: 6,000N
Lifting speed: 5-80 MM/S	Lifting speed: 5-80 MM/S	Lifting speed: 5-80 MM/S	Lifting speed: 5-150 MM/S
Travel range: 50-1500MM	Travel range: 50-1500MM	Travel range: 50-1500MM	Travel range: 100-3000MM
Retraction height: stroke + 300MM	Retraction height: stroke + 300MM	Retraction height: stroke + 300MM	Retraction height: stroke/2+300MM
Lateral moment: 400Nm dynamic	Lateral moment: 400Nm dynamic	Lateral moment: 400Nm dynamic	Lateral moment: 300Nm dynamic
Motor options: DC motor, servo motor, synchronous control, CAN bus	Motor options: DC motor, servo motor, synchronous control, CAN bus	Motor options: DC motor, servo motor, synchronous control, CAN bus	Motor options: DC motor, servo motor, synchronous control, CAN bus

TL series



TL3-98

Maximum pipe diameter: 98 MM
Maximum load: 6,000N
Lifting speed: 12-150 MM/S
Travel range: 100-2000MM
Retraction height: stroke/2 +300MM
Lateral moment: 300Nm dynamic
Motor options: Default servo motor,
integrated control, CAN bus



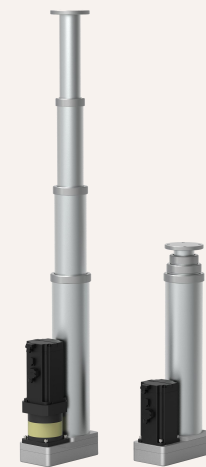
TL4-83

Maximum pipe diameter: 83 MM
Maximum load: 4,000N
Lifting speed: 12-200 MM/S
Travel range: 100-4000MM
Retraction height: stroke/3 +350MM
Lateral moment: 300Nm dynamic
Motor options: Default servo motor,
integrated control, CAN bus



TL4-98

Maximum pipe diameter: 98 MM
Maximum load: 4,000N
Lifting speed: 12-200 MM/S
Travel range: 100-4000MM
Retraction height: stroke/3 +350MM
Lateral moment: 300Nm dynamic
Motor options: Default servo motor,
integrated control, CAN bus



TL4-115

Maximum pipe diameter: 115 MM
Maximum load: 4,000N
Lifting speed: 12-200 MM/S
Travel range: 100-4000MM
Retraction height: stroke/3 +350MM
Lateral moment: 300Nm dynamic
Motor options: Default servo motor,
integrated control, CAN bus

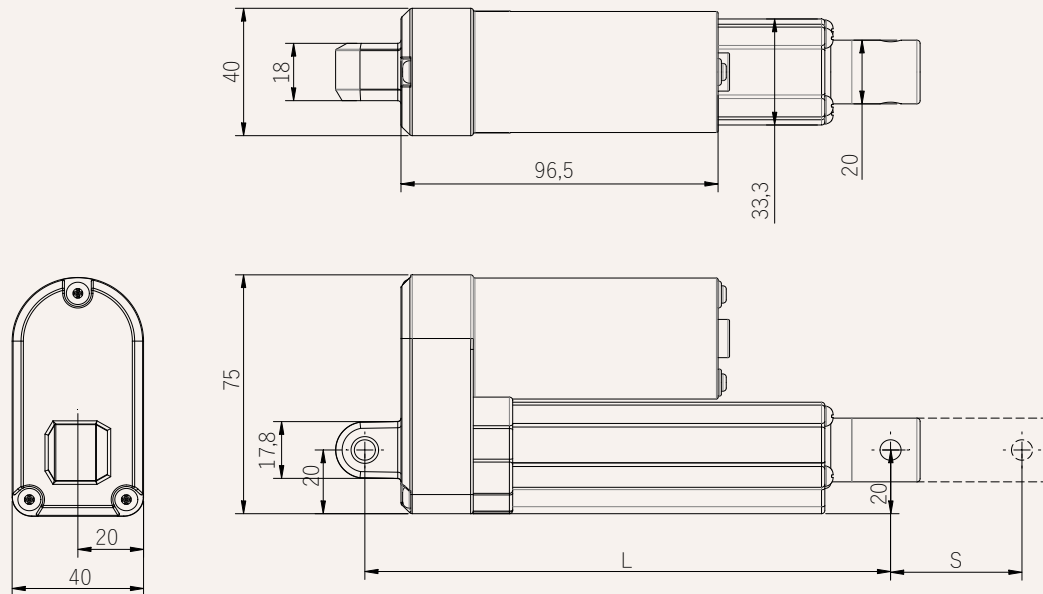
Customization, stable quality, long product life
And comply with linear transmission solutions for industrial applications

INDUSTRIAL DRIVE APPLICATION

HTA15



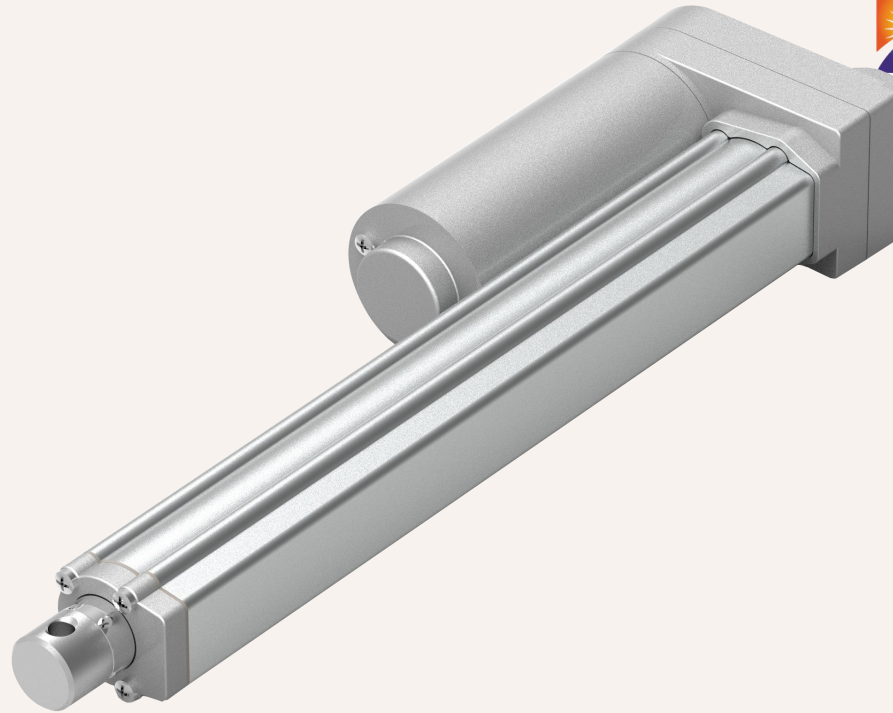
Standard size drawing (mm)



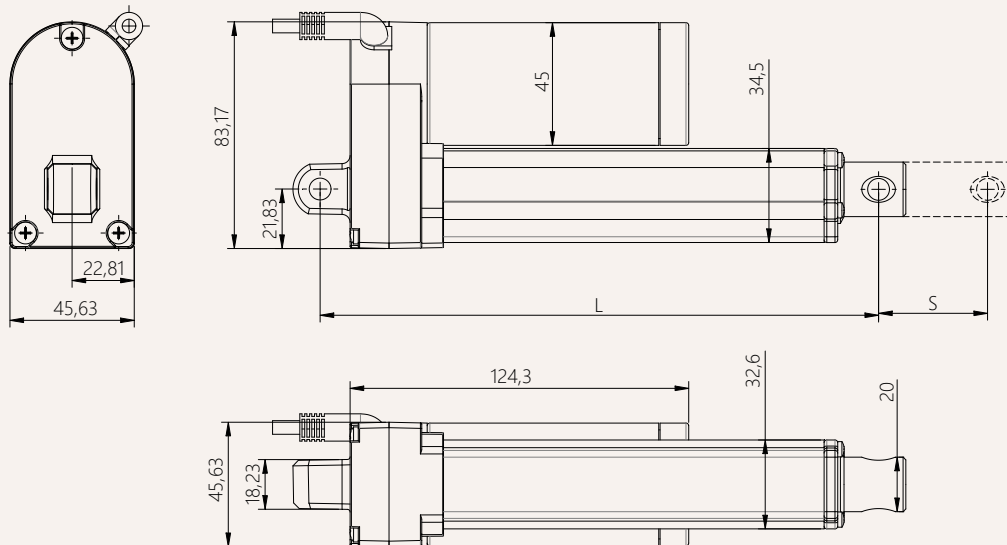
Product Features:

Maximum load:	1,500N	IP rating:	IP65
Max no-load speed:	80MM/S	Max load speed:	5MM/S
Stroke range:	20-800MM	Operating temperature:	-25°C~+75°C
Color:	Silver Gray	Working frequency:	20%
Other options:	Limit signal, potentiometer, Hall signal		
Installation dimensions:	S: Stroke		
	L: Retracted length		
	L=Stroke + 105 mm		
	When the stroke is greater than 300, the stroke + 120 MM		

HTA18



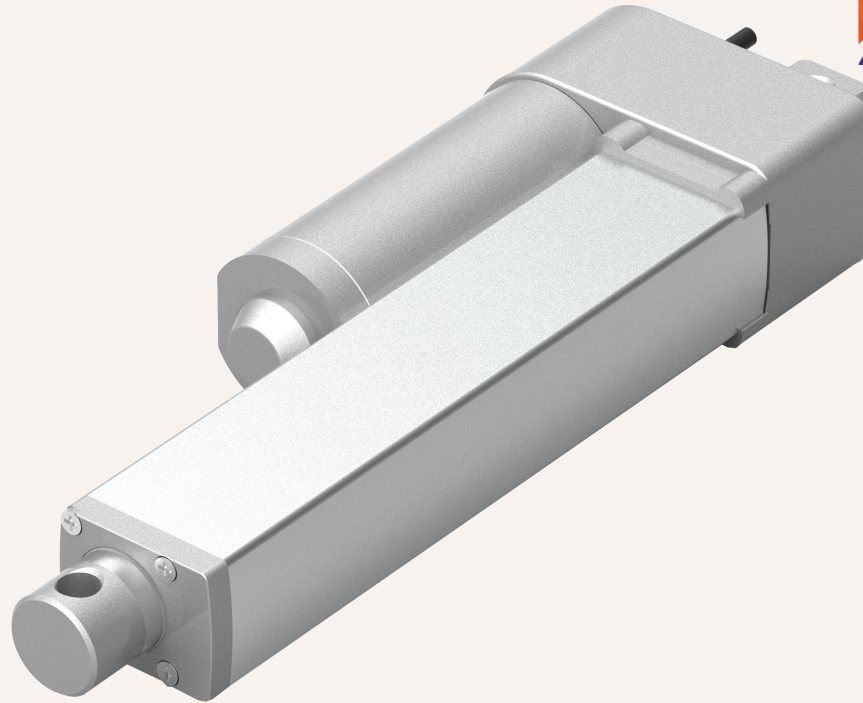
Standard size drawing (mm)



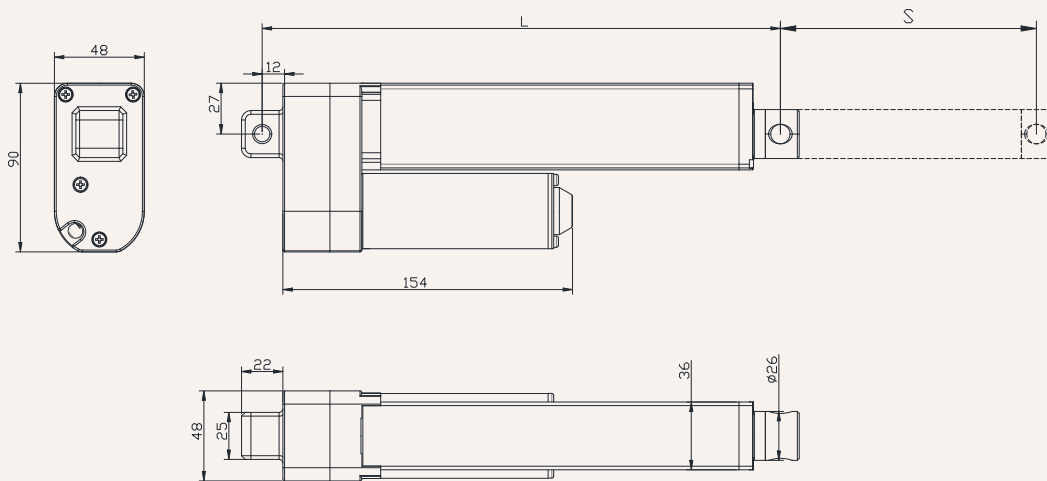
Product Features:

Maximum load:	4,500N	IP rating:	IP66
Max no-load speed:	80MM/S	Max load speed:	5MM/S
Stroke range:	20-800MM	Operating temperature:	-35°C~+75°C
Color:	Silver Gray	Working frequency:	20%
Other options:	Limit signal, potentiometer, Hall signal		
Installation dimensions:	S: Stroke		
	L: Retracted length		
	L=Stroke + 105 mm		
	When the stroke is greater than 300, the stroke + 120 MM		

HTA21



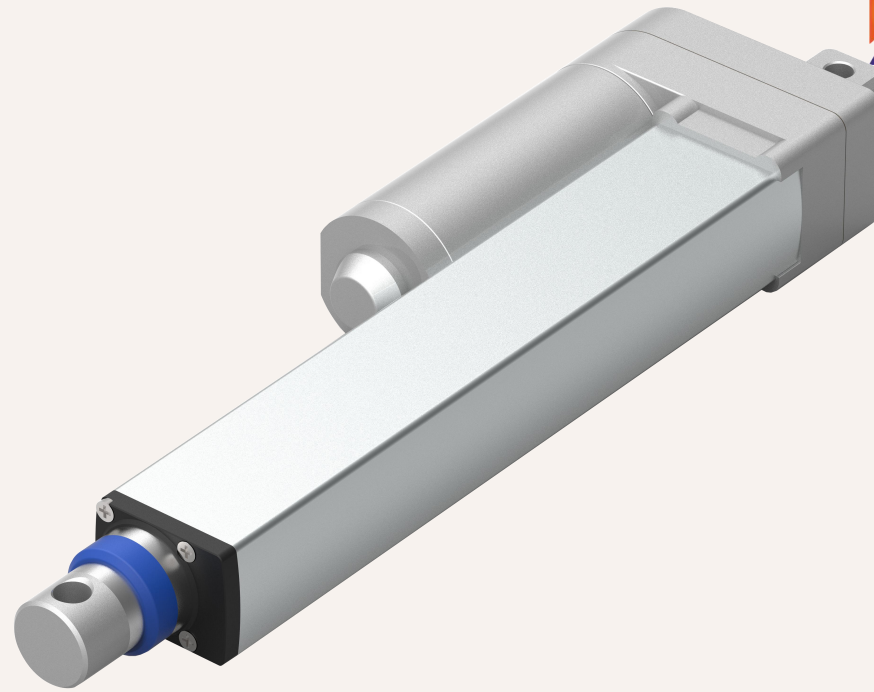
Standard size drawing (mm)



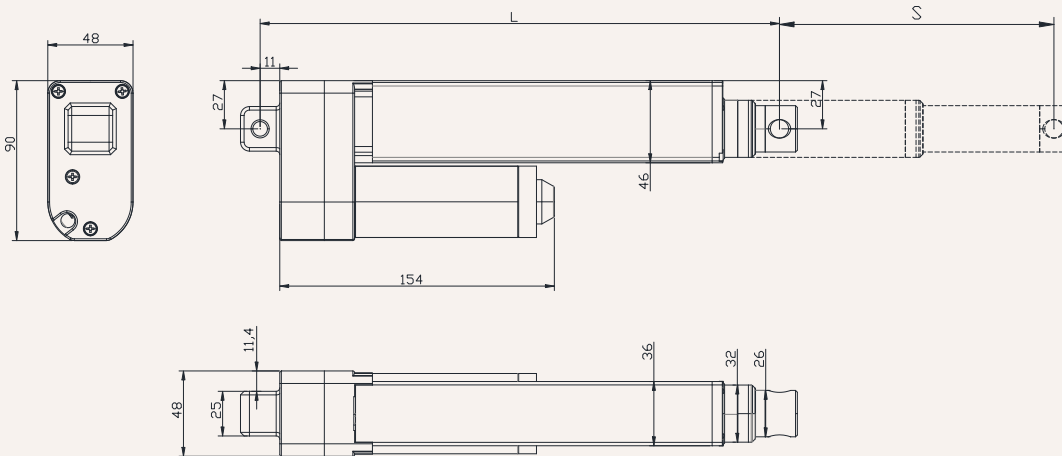
Product Features:

Maximum load:	4,500N	IP rating:	IP66
Max no-load speed:	40MM/S	Max load speed:	7MM/S
Stroke range:	20-800MM	Operating temperature:	-35°C~+75°C
Color:	Silver Gray	Working frequency:	20%
Other options:	Limit signal, potentiometer, Hall signal		
Installation dimensions:	S: Stroke		
	L: Retracted length		
	L=Stroke + 125 mm		
	When the stroke is greater than 300, the stroke + 140 MM		

HTA23



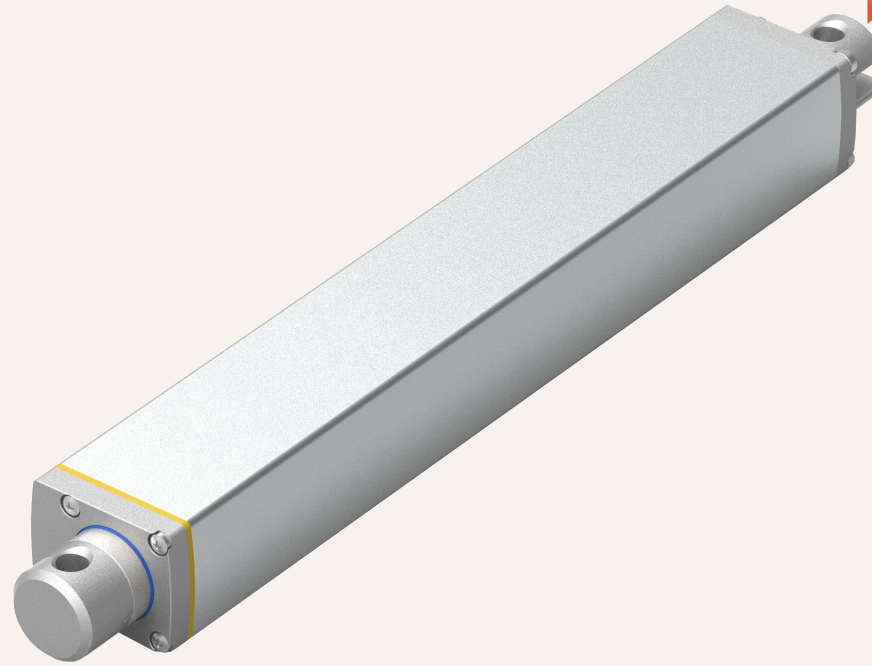
Standard size drawing (mm)



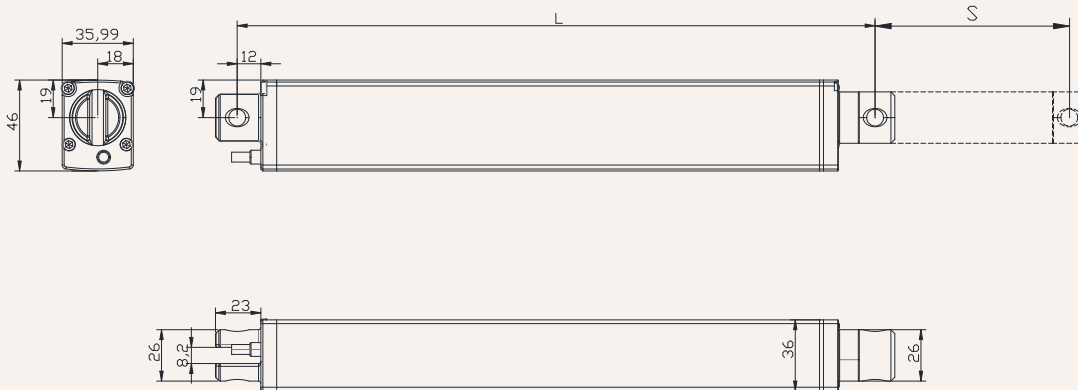
Product Features:

Maximum load:	2,500N	IP rating:	IP66
Max no-load speed:	90MM/S	Max load speed:	12MM/S
Stroke range:	200-1800	Operating temperature:	-35°C~+75°C
Color:	Silver Gray	Working frequency:	20%
Other options:	Limit signal, potentiometer, Hall signal		
Installation dimensions:	S: Stroke		
	L: Retracted length		
	$L = \text{Stroke} / 2 + 165 \text{ mm}$		
	When the stroke is greater than 1200, the stroke + 185 MM		

HTK37



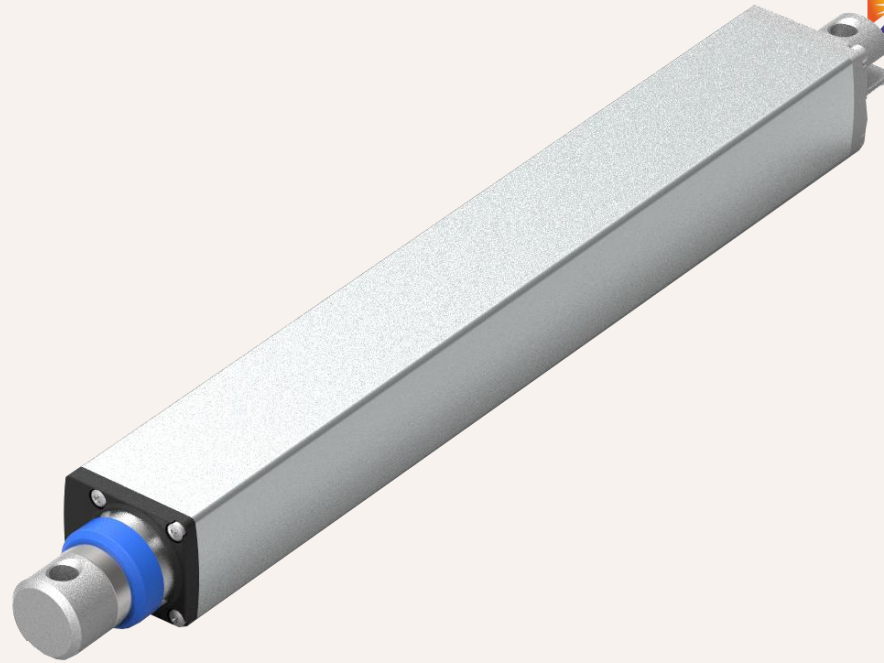
Standard size drawing (mm)



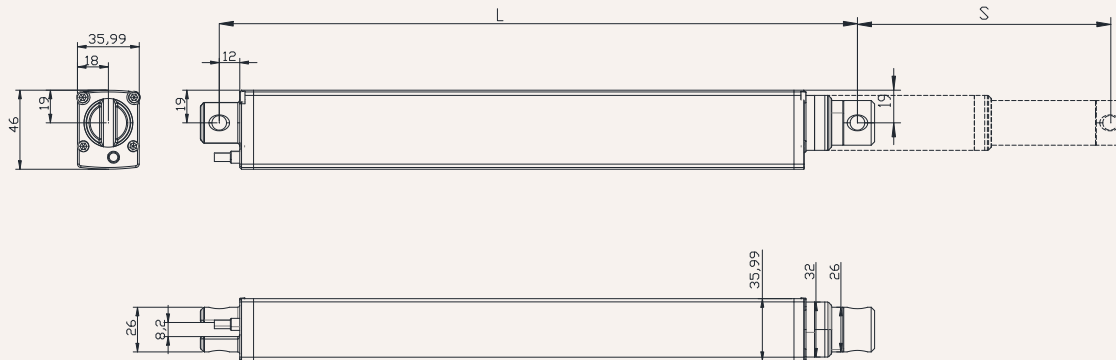
Product Features:

Maximum load:	1,700N	IP rating:	IP65
Max no-load speed:	63 MM/S	Max load speed:	5 MM/S
Stroke range:	50-1000	Operating temperature:	-35°C~+75°C
Color:	Silver Gray	Working frequency:	20%
Other options:	Limit signal, potentiometer, Hall signal		
Installation dimensions:	S: Stroke		
	L: Retracted length		
	L=Stroke + 230 mm		
	When the stroke is greater than 500, the stroke + 250 MM		

HTK38



Standard size drawing (mm)



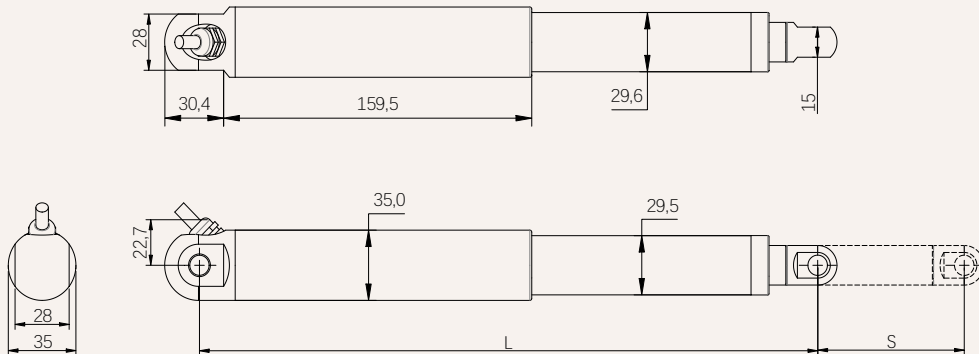
Product Features:

Maximum load:	1,000N	IP rating:	IP65
Max no-load speed:	100 MM/S	Max load speed:	6 MM/S
Stroke range:	200-1500	Operating temperature:	-35°C~+75°C
Color:	Silver Gray	Working frequency:	20%
Other options:	Limit signal, potentiometer, Hall signal		
Installation dimensions:	S: Stroke		
	L: Retracted length		
	$L = \text{Stroke} / 2 + 280 \text{ mm}$		
	When the stroke is greater than 900, the stroke + 300 MM		

HTK35



Standard size drawing (mm)



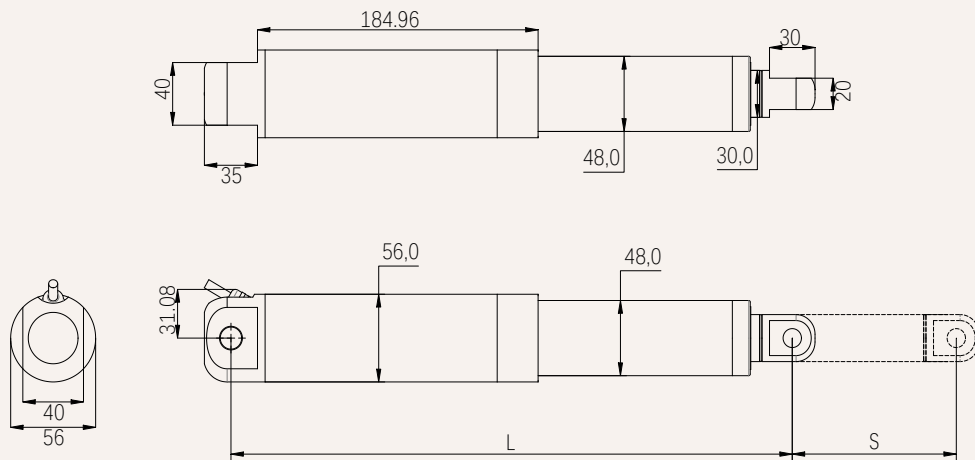
Product Features:

Maximum load:	1,700N	IP rating:	IP65
Max no-load speed:	63 MM/S	Max load speed:	5 MM/S
Stroke range:	50-1000	Operating temperature:	-35°C~+75°C
Color:	Silver Gray	Working frequency:	20%
Other options:	Limit signal, potentiometer, Hall signal		
Installation dimensions:	S: Stroke		
	L: Retracted length		
	L=Stroke + 240 mm		
	When the stroke is greater than 500, the stroke + 260 MM		

HTK55



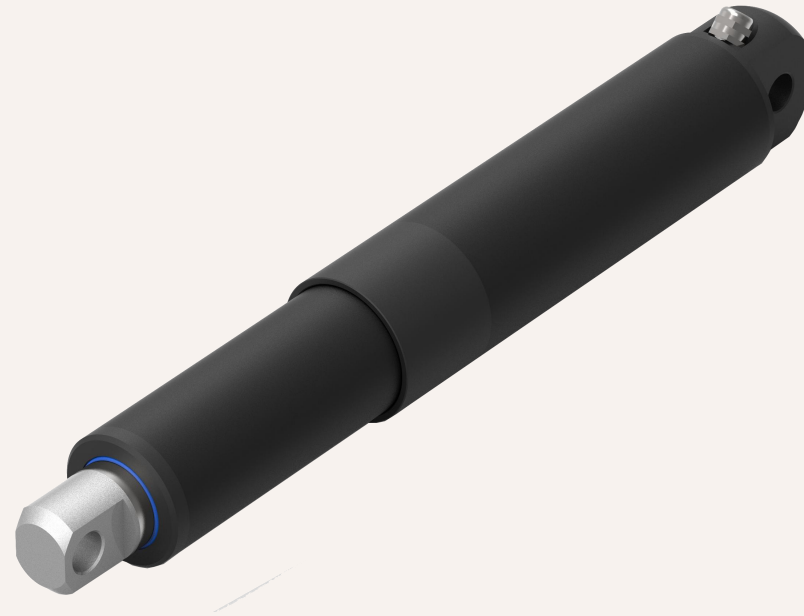
Standard size drawing (mm)



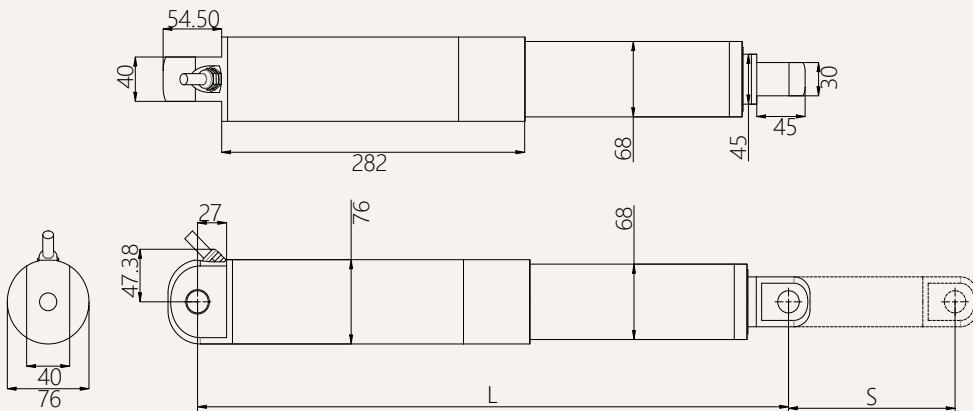
Product Features:

Maximum load:	6,000N	IP rating:	IP65
Max no-load speed:	70 MM/S	Max load speed:	3 MM/S
Stroke range:	50-1200	Operating temperature:	-35°C ~ +75°C
Color:	Silver Gray	Working frequency:	20%
Other options:	Limit signal, potentiometer, Hall signal		
Installation dimensions:	S: Stroke		
	L: Retracted length		
	L=Stroke + 240 mm		
	When the stroke is greater than 500, the stroke + 260 MM		

HTK75



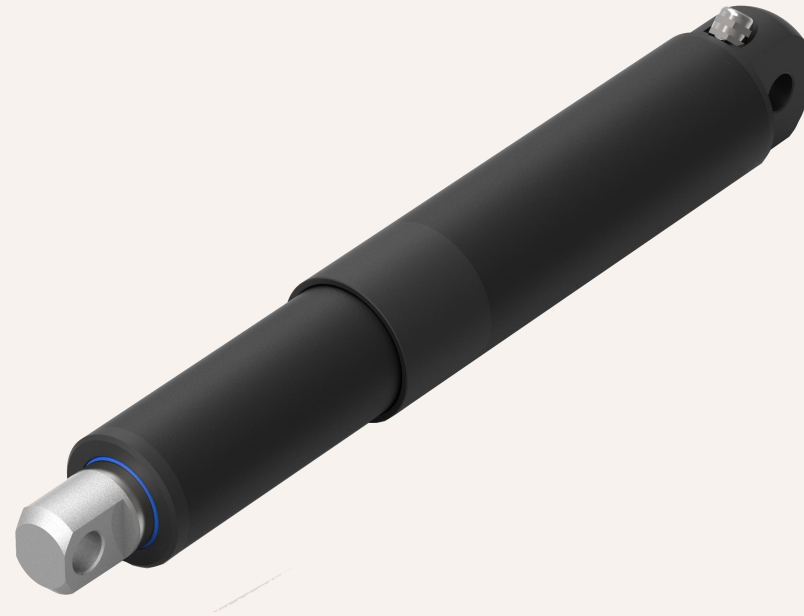
Standard size drawing (mm)



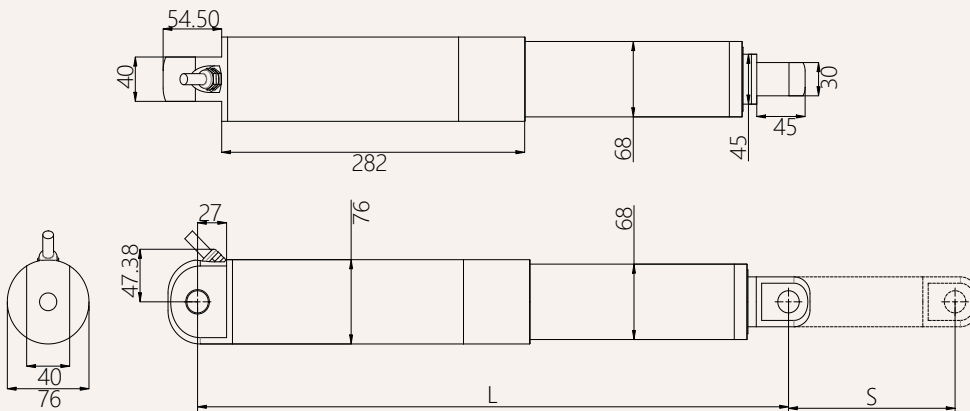
Product Features:

Maximum load:	18,000N	IP rating:	IP66
Max no-load speed:	90 MM/S	Max load speed:	3 MM/S
Stroke range:	50-1500	Operating temperature:	-35°C~+75°C
Color:	Silver gray, black	Working frequency:	20%
Other options:	Limit signal, potentiometer, Hall signal		
Installation dimensions:	S: Stroke		
	L: Retracted length		
	L=Stroke + 500 mm		
	When the stroke is greater than 800, the stroke + 550 MM		

HTK78



Standard size drawing (mm)



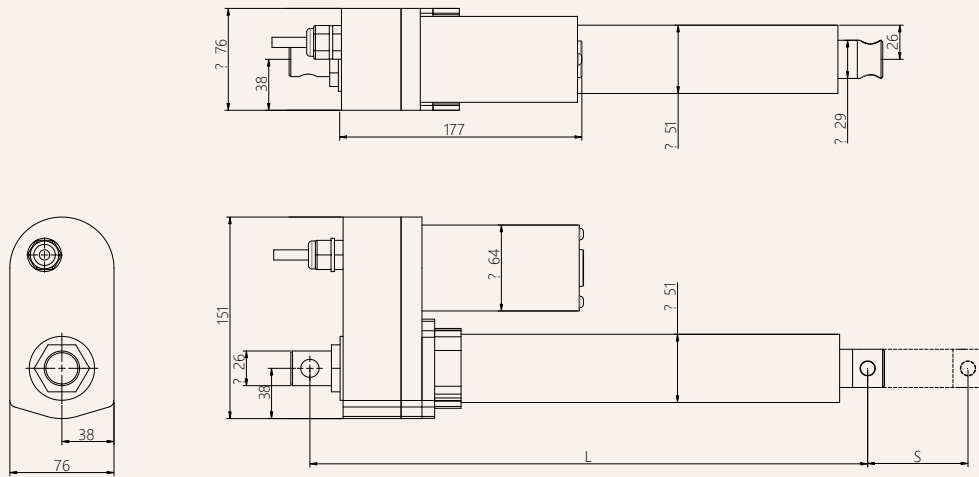
Product Features:

Maximum load:	4,000N	IP rating:	IP65
Max no-load speed:	120 MM/S	Max load speed:	12 MM/S
Stroke range:	50-2000	Operating temperature:	-35°C~+75°C
Color:	Silver gray, black	Working frequency:	20%
Other options:	Limit signal, potentiometer, Hall signal		
Installation dimensions:	S: Stroke		
	L: Retracted length		
	$L = \text{Stroke} / 2 + 550 \text{ mm}$		
	When the stroke is greater than 1000, the stroke + 600 MM		

HTW10A



Standard size drawing (mm)



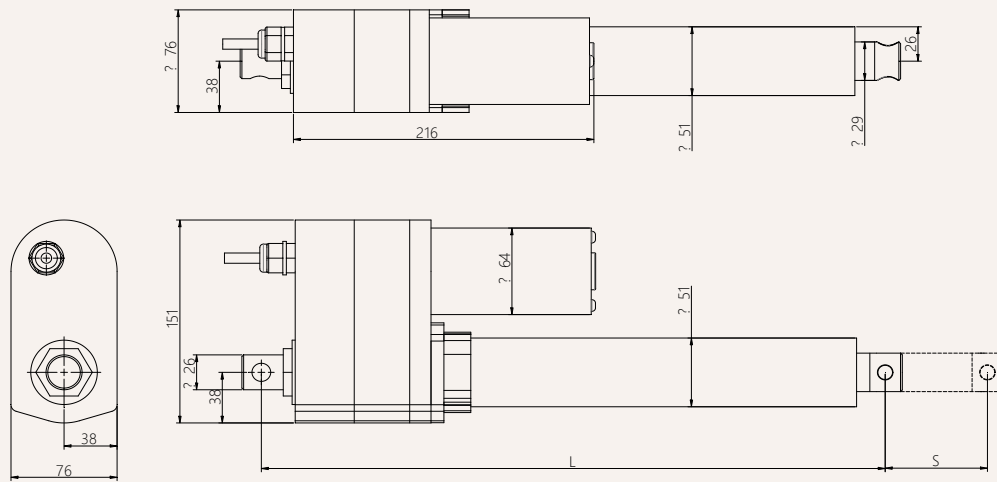
Product Features:

Maximum load:	7,000N	IP rating:	IP66
Max no-load speed:	36 MM/S	Max load speed:	4 MM/S
Stroke range:	50-1200	Operating temperature:	-35°C~+75°C
Color:	black	Working frequency:	20%
Other options:	Clutch limit, Hall signal		
Installation dimensions:	S: Stroke		
	L: Retracted length		
	L=Stroke + 200 mm		
	When the stroke is greater than 800, the stroke + 250 MM		

HTW10B



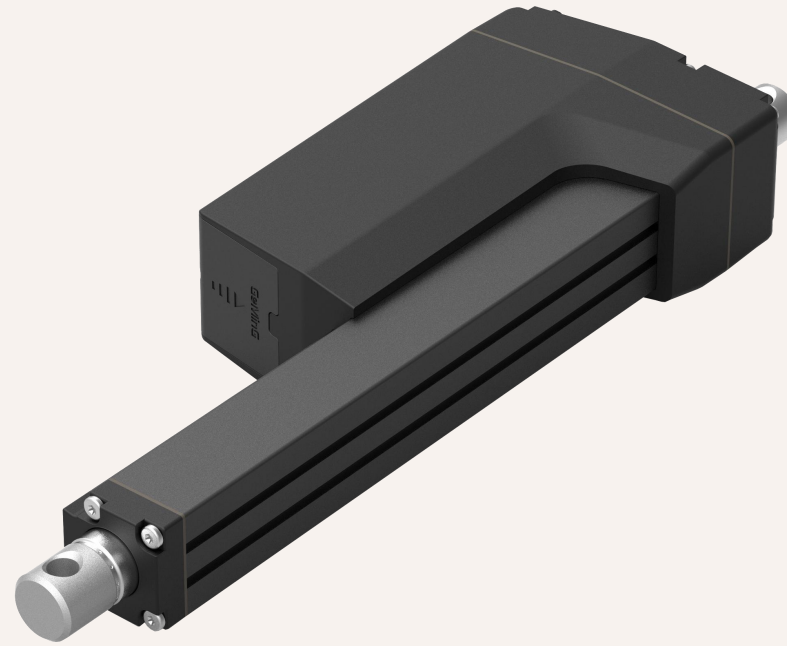
Standard size drawing (mm)



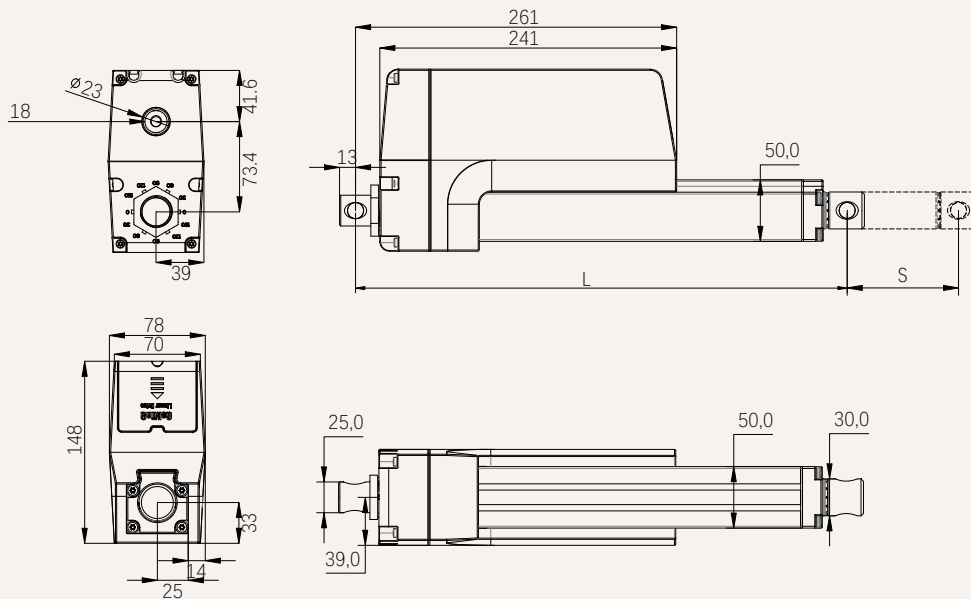
Product Features:

Maximum load:	7,000N	IP rating:	IP66
Max no-load speed:	36 MM/S	Max load speed:	4 MM/S
Stroke range:	50-1200	Operating temperature:	-35°C~+75°C
Color:	black	Working frequency:	20%
Other options:	Electronic switch limit, potentiometer, Hall signal		
Installation dimensions:	S: Stroke		
	L: Retracted length		
	L=Stroke + 250 mm		
	When the stroke is greater than 800, the stroke + 300 MM		

HTW76



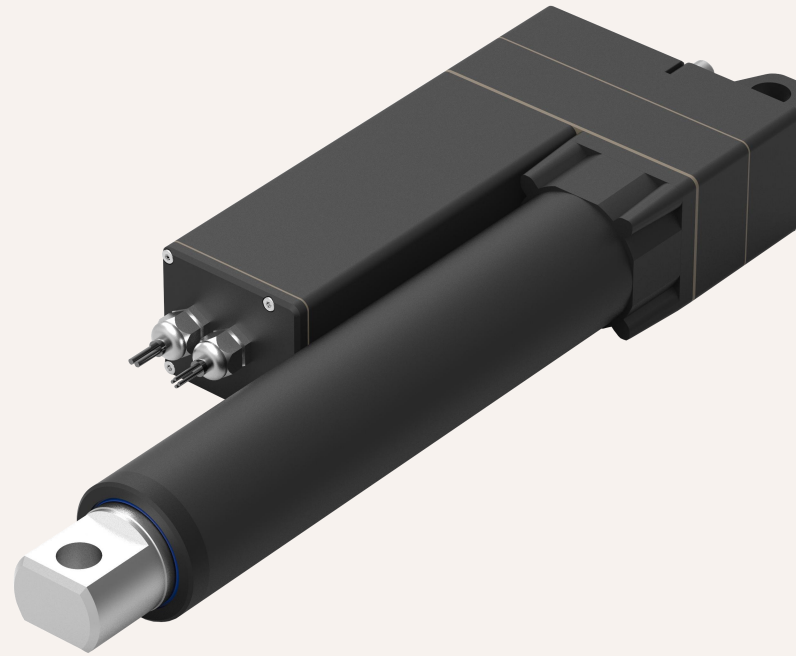
Standard size drawing (mm)



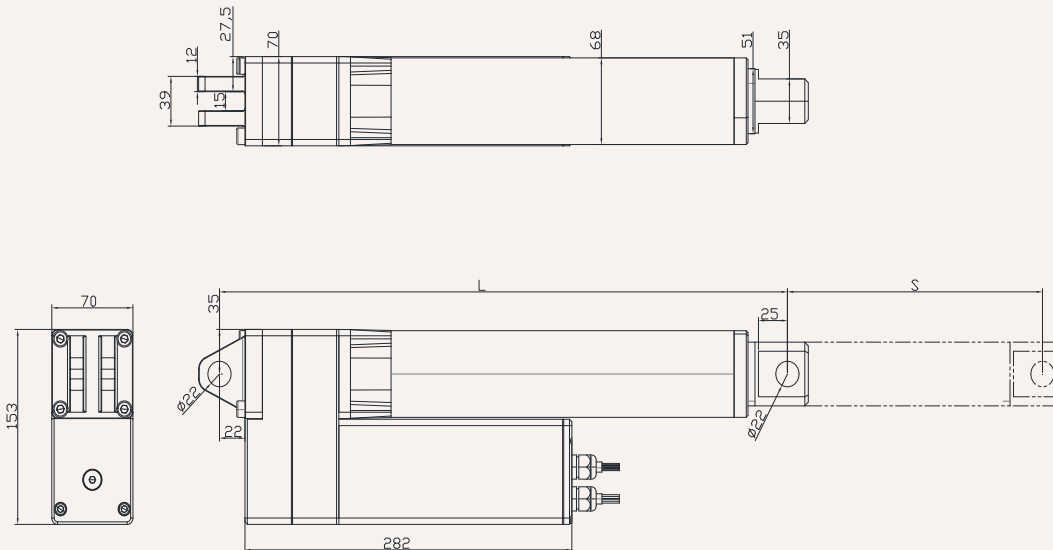
Product Features:

Maximum load:	16,000N	IP rating:	IP66
Max no-load speed:	130 MM/S	Max load speed:	5 MM/S
Stroke range:	50-1200	Operating temperature:	-35°C~+75°C
Color:	black	Working frequency:	20%
Other options:	Electronic switch limit, potentiometer, Hall signal		
Installation dimensions:	S: Stroke		
	L: Retracted length		
	L=Stroke + 250 mm		
	Special customized travel can be +200MM,		
	When the stroke is greater than 800, the stroke + 300 MM		

HTL2



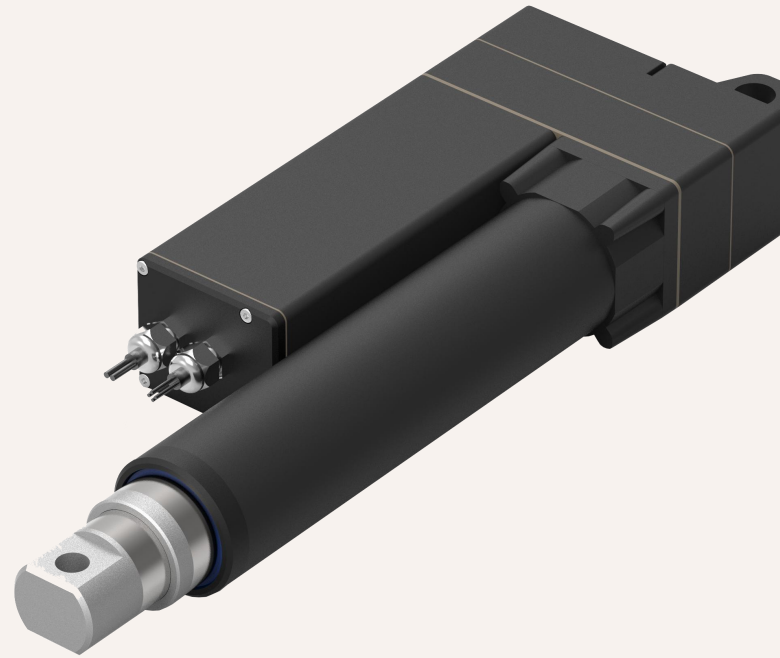
Standard size drawing (mm)



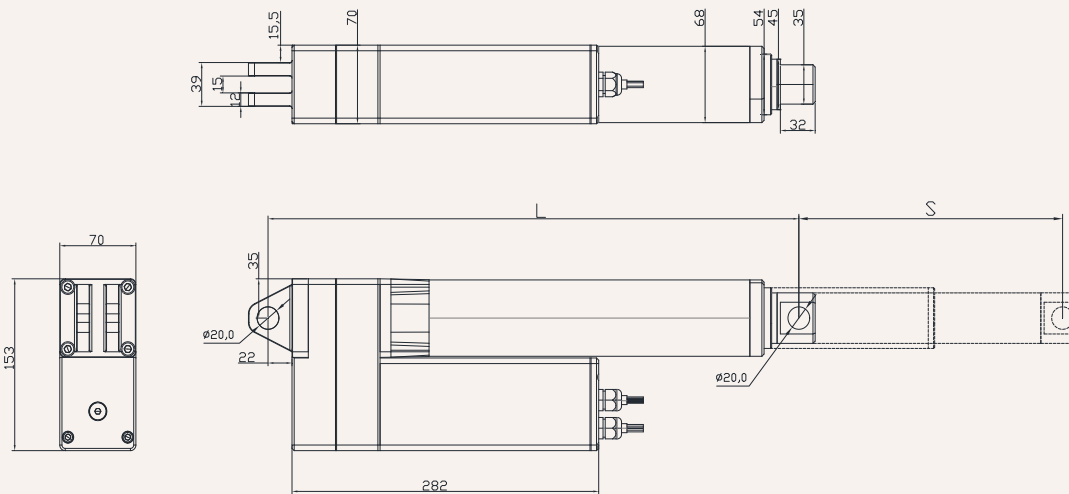
Product Features:

Maximum load:	16,000N	IP rating:	IP66
Max no-load speed:	130 MM/S	Max load speed:	5 MM/S
Stroke range:	50-1200	Operating temperature:	-35°C~+75°C
Color:	black	Working frequency:	20%
Other options:	Electronic switch limit, potentiometer, Hall signal		
Installation dimensions:	S: Stroke		
	L: Retracted length		
	L=Stroke + 250 mm		
	When the stroke is greater than 1000, the stroke + 300 MM		

HTL3



Standard size drawing (mm)



Product Features:

Maximum load:	8,000N	IP rating:	IP66
Max no-load speed:	130 MM/S	Max load speed:	12 MM/S
Stroke range:	50-2000	Operating temperature:	-35°C~+75°C
Color:	black	Working frequency:	20%
Other options:	Electronic switch limit, potentiometer, Hall signal		
Installation dimensions:	S: Stroke		
	L: Retracted length		
	$L = \text{Stroke}/2 + 300 \text{ mm}$		
	When the stroke is greater than 1200, the stroke + 350 MM		

Terms of use

It is the user's responsibility to determine whether a GeMinG transmission product is suitable for a particular application. GeMinG Chromium Ming Transmission discreetly provides the latest information about products. However, in order to improve the performance of its products during the ongoing research and development process, GeMinG transmission products may be modified or changed without prior notice. Therefore, GeMinG Transmission cannot guarantee that the information related to the products published in its catalog will remain the most accurate and authentic.

GeMinG Chrome Ming Transmission reserves the right to stop selling any products listed on the company's website, product catalogs, or other written materials.

To obtain the latest and most accurate product information, please refer to the GeMinG transmission website:

www.Gemingag.com



China

+86-137 7777 5412

hong@Gemingag.com

Australia

Fbama@Gemingag.com

USA

+704-685 6536

Geming@Geimgag.com

South Korea

Zbb@Gemingag.com

Canada

+82-5869 6254

hv.p@Gemingag.com

Europe

Geming@Geimgag.com