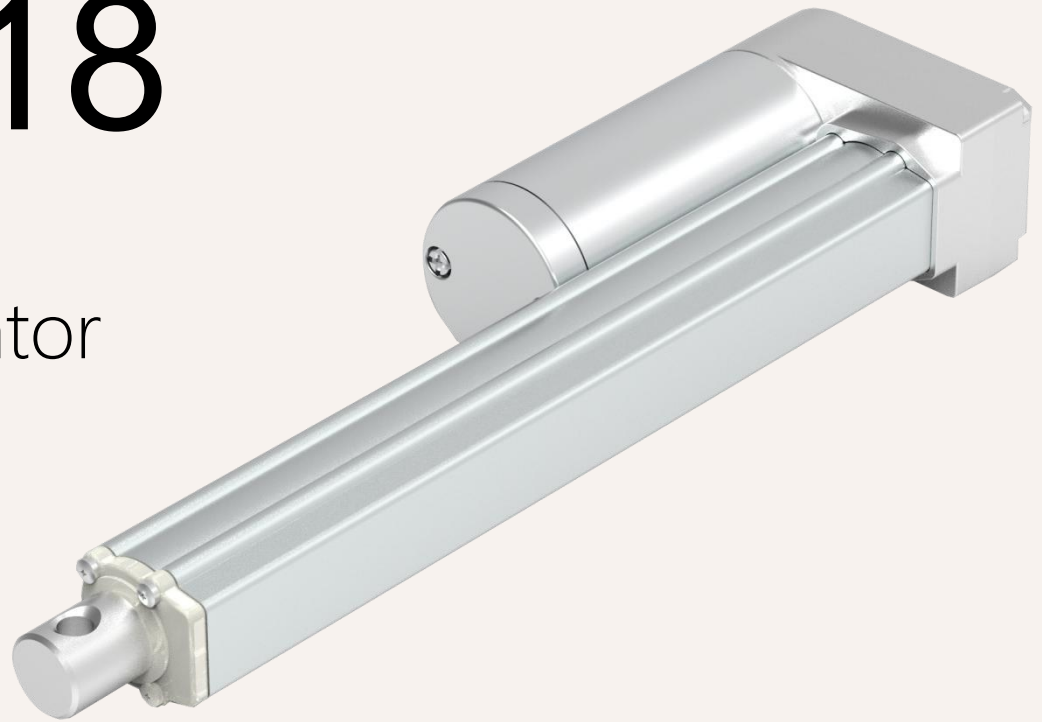


# HTA18

Series model

Linear Actuator



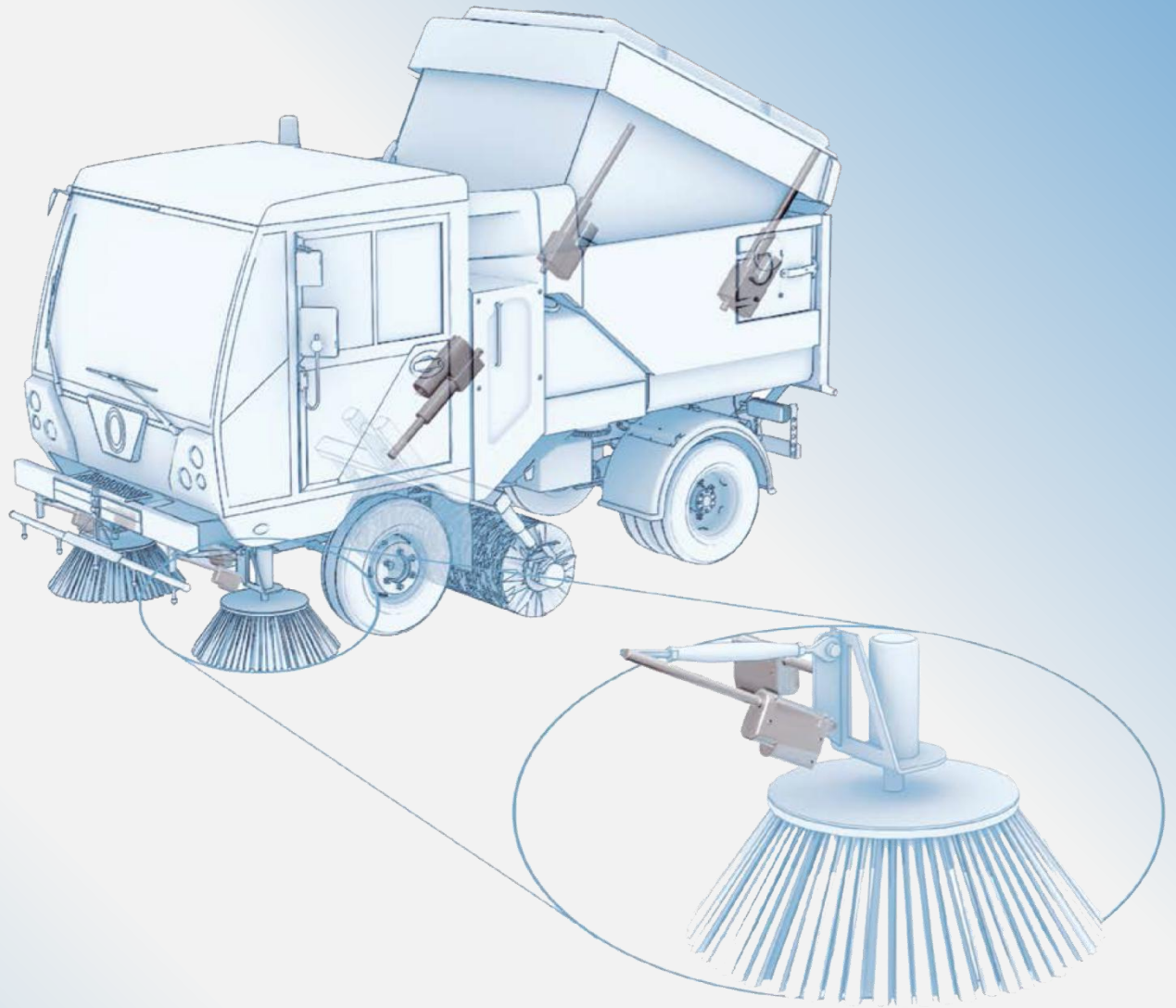
## Applications

1. Industrial
2. Agricultural
3. Construction
4. Cleaning Sweepers
5. Windows
6. New Energy Vehicles

HTA series linear actuator is designed for various applications such as industrial, agricultural, constructions, cleaning sweepers, ships, and so on. The small size and compact design ensure the installation not limited by terrain and distance, and with an IP65 protection level it is an ideal product to replace hydraulic and pneumatic actuators.

## Features

Voltage:	12V, 24V, 36V, and 48V DC
Max Push/Pull Force:	3500N (Push), 2500N(Pull)
Speed @ Full load:	5.mm / s (load 3500N)
Retracted Length:	stroke + 105mm , stroke + 120mm(stroke >300 MM)
Dynamic Torque:	50Nm
Static Torque:	80Nm
Color:	Silver, Black
Noise:	60DB
Quality Management:	ISO9001-2008, certified by CE and ROHS
Ambient temp. Range:	-35 ° C ~ + 75 ° C
Operating Temp. Range:	+5 ° C ~ + 45 ° C
Protection Level:	IP65
Screw Type:	Trapezoidal
Signal Output:	No
Option for Control System:	Separate Control
Material:	High-strength metal zinc alloy gear box and housing
Limit Switch:	Built-in, but not adjustable



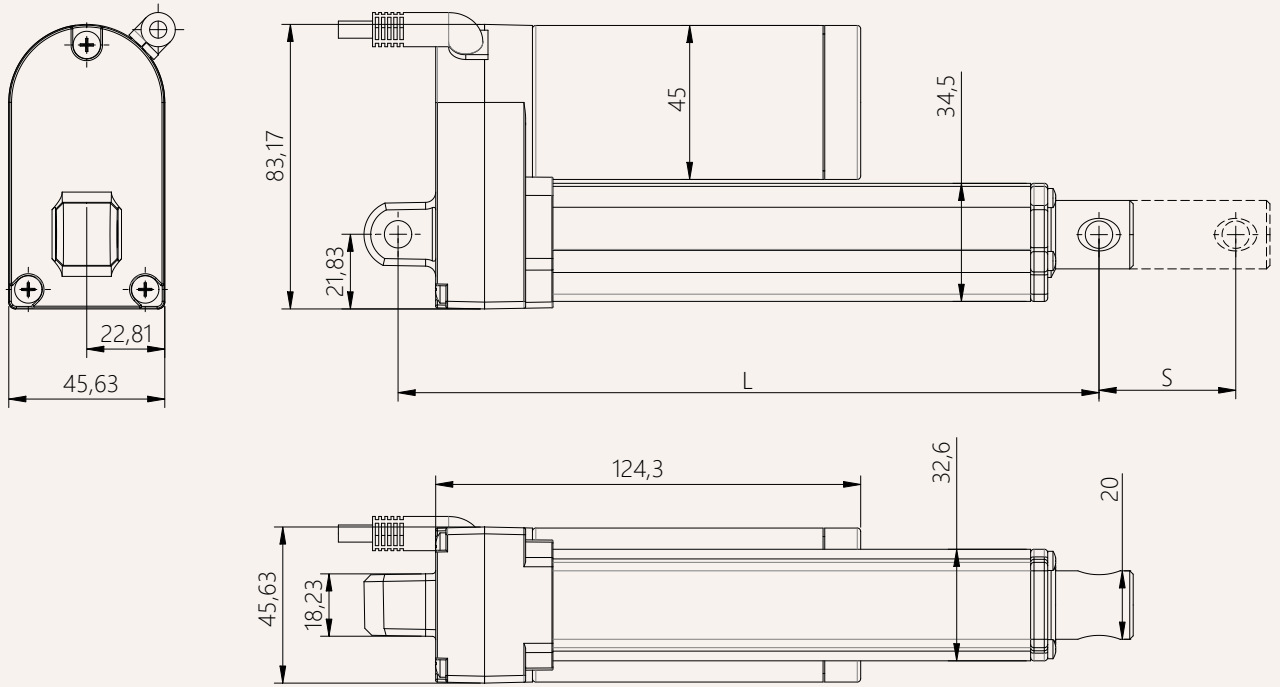
## Application Case: for positioning and for broom

Linear actuators replace hydraulic and pneumatic cylinders.

Better controllability, smaller installation space and no maintenance.

Drawings

Dimension  
(MM)



S: Stroke

L: Retracted length

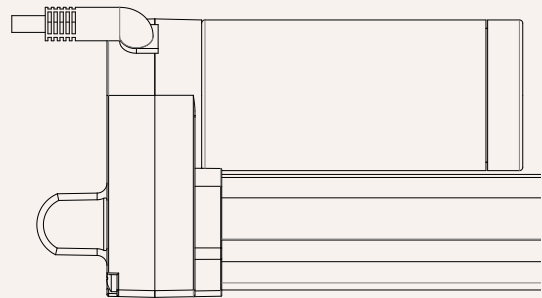
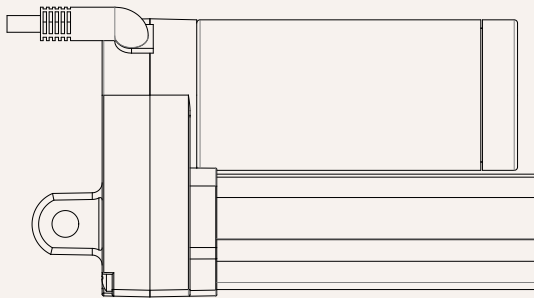
L=Stroke + 105mm

When stroke >= 300mm L=Stroke + 120MM

Mounting Angle (Counterclockwise):

1=0°

2=90°



LOAD & SPEED						
Code	Rated Load	Rated Load	Self-lock	Rated Current	Rated Speed	Rated Speed
	Push N	Pull N	Static N	Full-load A	No-load mm/s	Full-load mm/s
Voltage (12V DC)						
A	4000	4000	4500	6.4	5.2	4.0
B	2000	2000	2200	6.4	10.0	8.0
C	900	900	000	6.2	15	12
D	600	600	650	6.2	20	18
E	300	300	300	5.2	45	36
F	200	200	000	5.2	65	53

Voltage (24V DC)						
G	4000	4000	4500	3.4	5.2	4.6
H	2000	2000	2200	3.4	10.0	7.8
J	900	750	000	3.2	20	16
K	600	600	650	3.2	30	25
L	300	300	300	2.2	50	44
M	200	200	000	2.2	65	53

**Remark**

1. The current and speed in the table are the averages tested when using push force.
2. The current & speed results in the table are based on the use of a GaMinG brand control box, and there will be an error of about 10% depending on different types of the control box.
3. 29V DC @ no-load, 24V DC @ rated load
4. Stroke & Load :

Load (N)	Stroke Range (mm)
3500	50-400
2500	401-600
<=1500	601-1000

**Reference Chart**

HTA18 Model	Load±10% (N)					Speed ± 2 (mm / sec)
<b>Load</b>	4000	2000	900	600	300	200
<b>Speed</b>	05	10	20	30	50	65

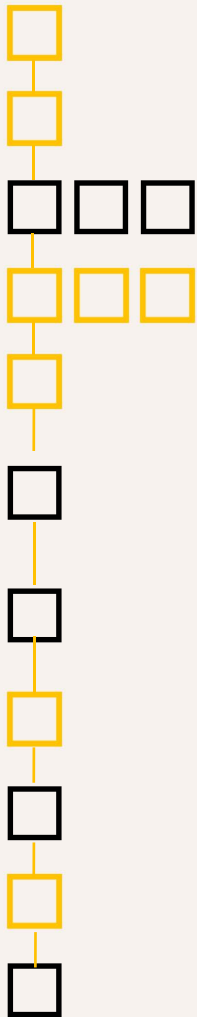
HTA18 Model	Stroke ± 2 (mm)					Retracted Length ± 2 (mm)			
<b>Stroke</b>	50	100	150	200	250	300	350	400	450
<b>Retracted</b>	155	205	255	305	355	420	470	520	570

**Remark:**

Stroke & Retracted length:

1. If stroke <300mm, Retracted length = stroke +105mm  
Eg. Stroke 100mm, retracted length=205mm, extended length=305mm
2. If stroke >=300mm, Retracted length = stroke +120mm  
Eg. Stroke 400mm, retracted length=520mm, extended length=920mm

HTA18



Voltage	12=12V DC	24=12V DC	36=36V DC	48=48V DC
Speed(mm/s)	Refer to <a href="#">Page 3</a>			
Stroke(mm)				
Retracted Length (mm)	Refer to <a href="#">Page 2</a>			
Load(N)	Refer to <a href="#">Page 4</a>			
Front Attachment refer to <a href="#">Page 6</a>	1 = Normal, dia 8.5mm 3 = U shape, width 8mm, dia 8.5mm 5 = O type, width 14mm, dia 8.5mm	2 = Normal, dia 10.5mm 4 = U shape, width 8mm, dia 10.5mm 6 = O type, width 14mm, dia 10.5mm		
Rear Attachment refer to <a href="#">Page 6</a>	1 =0°, dia 8.5mm 3 =90°, dia 8.5mm	2 =0°, dia 10.5mm 4 =90°, dia 10.5mm		
Wire/Plug Refer to <a href="#">Page 6</a>	1 = stripped wire 3 = 4 pin 0° straight plug	2 = 4 pin 90° curved plug 4 = 6 pin 0° straight plug		
Screw	P=Trapezoidal			
Signal Output	N = No	H =Hall Sensor		
Wire Length	1 = 600mm	2 = 1000mm	3 = 1500mm	4 = customized
Eg.: voltage: 12V DC, stroke 100MM, speed 5MM / S, load 4000N Code: HTA18-12-5-100-205 / 305-4000N-1-A-1				

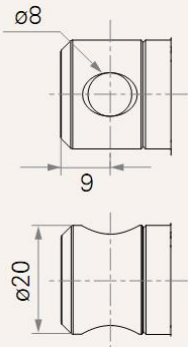
Statement

It is the user's responsibility to determine whether the licensed application is suitable for a particular product. However, as the research and development process continues to improve its product performance, GEMING can make modifications or changes without prior notice. Therefore, GEMING reserves the right to stop sales on the company's website, product catalog, terms of use or all other written information. All kinds of physical and chemical information can maintain the most accurate and true state.

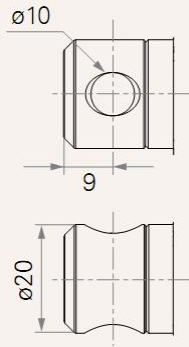
# HTA18 Reference Chart for Attachment

## Front Attachment

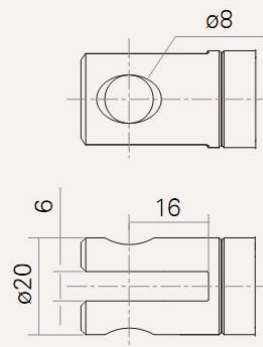
1=Normal, Aperture 8.5



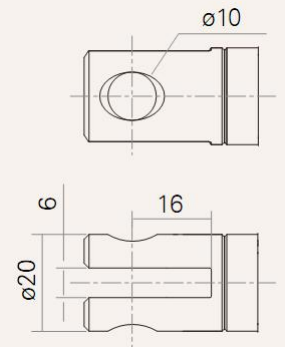
2=Normal, Aperture 10.5



3=U-type slot , width 6.1, Depth 16.0, aperture 8.5



4=U-type slot , width 6.1, Depth 16.0, aperture 10.5



5=O type, width 14.0, depth 16.1, aperture 8.5

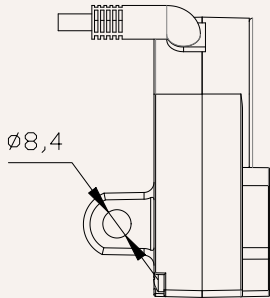
6=O type, width 14.0, Depth 16.1, aperture 10.5

7=

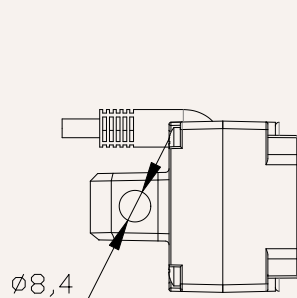
8=

## Rear Attachment

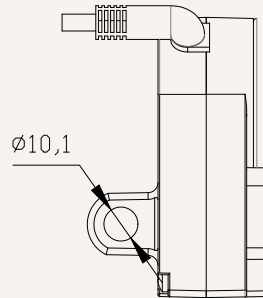
1=0 degree, Aperture 8.5mm



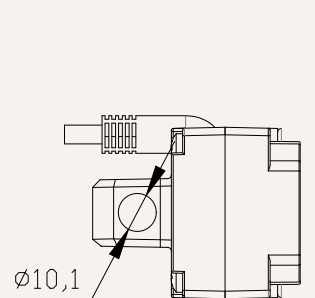
2=90degree, Aperture 8.5mm



2=0 degree, Aperture 10.5mm

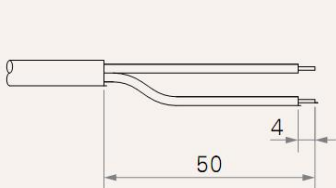


2=90 degree, Aperture 10.5mm

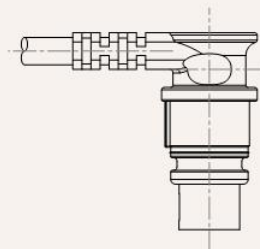


## Wire / Plug

1= stripped wire



2 = 4 pin 90° curved plug



3 = 4 pin 0° straight plug

